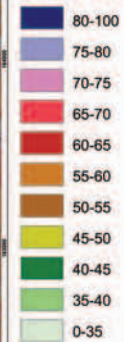


# The London Road Traffic Noise Map

Hillingdon  
Plot B

## Legend

$L_{den}$  dB Noise from all roads  
For 2001 traffic flows



- Local Authority Boundary
- River Thames
- Building

Not to Scale  
Printed 22 March 2004  
Issue 1.0

This map has been produced by computer calculation and is based on traffic flow information in the London Emissions Inventory for 2001.

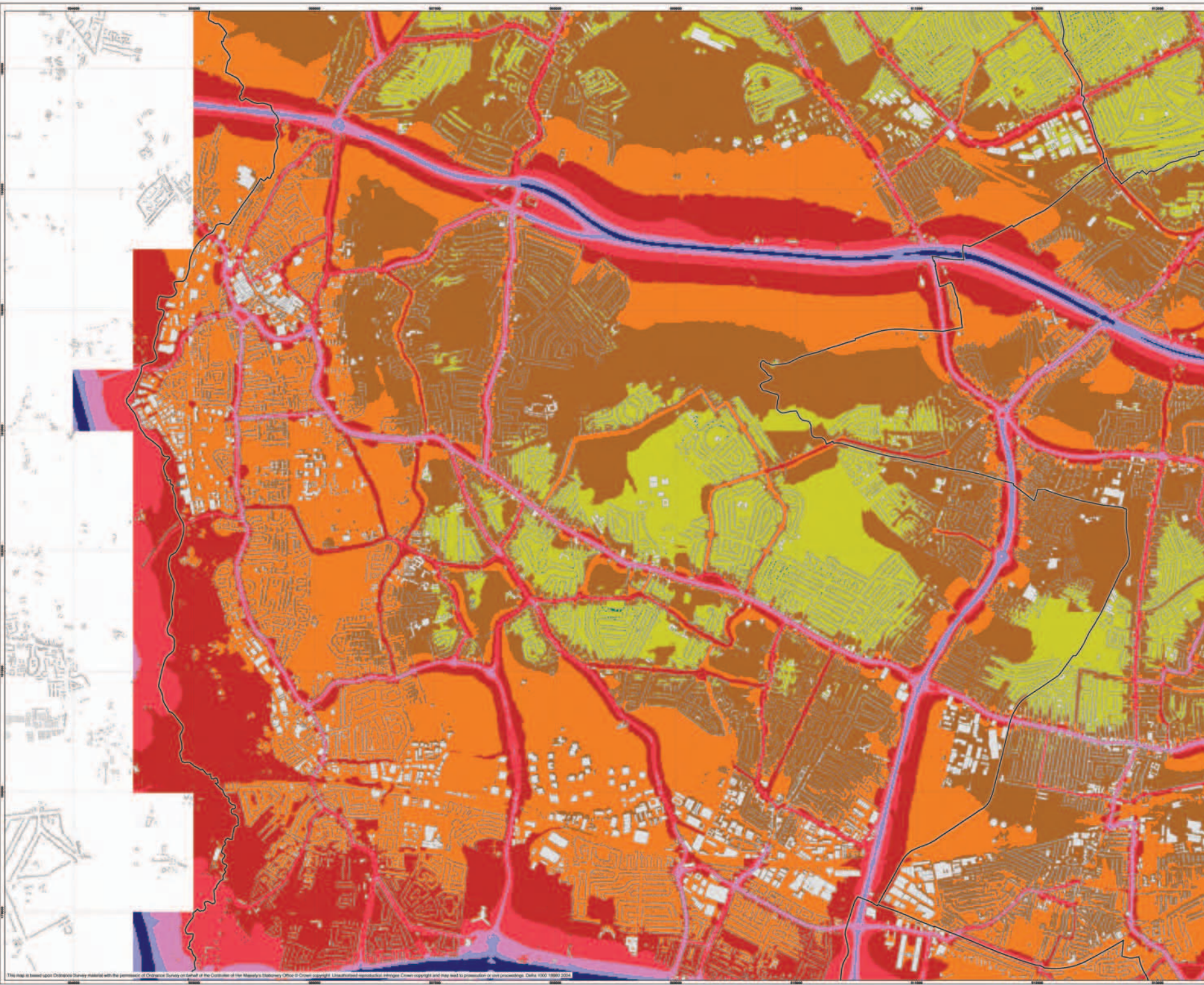
All buildings are assumed to be 8m high.

$L_{den}$  is the equivalent continuous noise level ( $L_{Aeq}$ ) over a whole 24-hour period, but with noise in the evening (19:00 to 23:00) increased by 5dB and noise at night (23:00 to 07:00) increased by 10dB to reflect the greater noise-sensitivity of people at those times.

**ATKINS**

**defra**  
Department for Environment  
Food and Rural Affairs

TPS schal



This map is based upon Ordnance Survey data related with the permission of Ordnance Survey on behalf of the Controller of Her Majesty's Stationery Office & Crown Copyright. Unauthorised reproduction, storage, retrieval, copying, distribution, or any information system, is prohibited. Data 1000 1000 2004