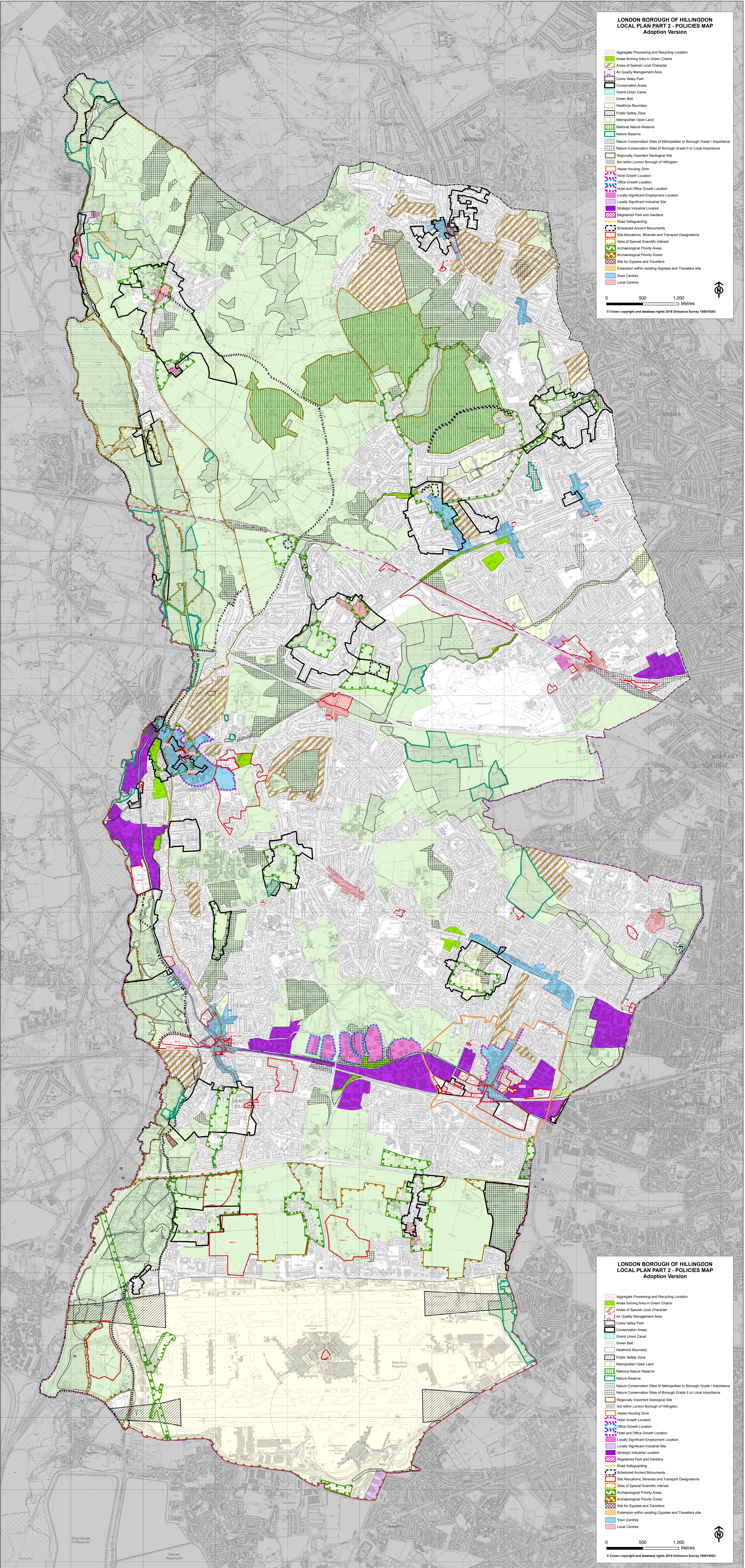
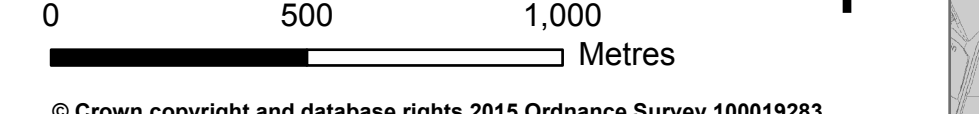


LONDON BOROUGH OF HILLINGDON  
LOCAL PLAN PART 2 - POLICIES MAP  
Adoption Version

- Aggregate Processing and Recycling Location
- Areas forming links in Green Chains
- Areas of Special Local Character
- Air Quality Management Area
- Cole Valley Park
- Conservation Areas
- Grand Union Canal
- Green Belt
- Heathrow Boundary
- Public Safety Zone
- Metropolitan Open Land
- National Nature Reserve
- Nature Reserve
- Nature Conservation Sites of Metropolitan or Borough Grade I Importance
- Nature Conservation Sites of Borough Grade II or Local Importance
- Regionally Important Geological Site
- Not within London Borough of Hillingdon
- Hayes Housing Zone
- Hotel Growth Location
- Office Growth Location
- Hotel and Office Growth Location
- Locally Significant Employment Location
- Locally Significant Industrial Site
- Strategic Industrial Location
- Registered Park and Gardens
- Road Safeguarding
- Scheduled Ancient Monuments
- Site Allocations, Minerals and Transport Designations
- Sites of Special Scientific Interest
- Archaeological Priority Areas
- Archaeological Priority Zones
- Site for Gypsies and Travellers
- Extension within existing Gypsies and Travellers site
- Town Centres
- Local Centres



LONDON BOROUGH OF HILLINGDON  
LOCAL PLAN PART 2 - POLICIES MAP  
Adoption Version

- Aggregate Processing and Recycling Location
- Areas forming links in Green Chains
- Areas of Special Local Character
- Air Quality Management Area
- Cole Valley Park
- Conservation Areas
- Grand Union Canal
- Green Belt
- Heathrow Boundary
- Public Safety Zone
- Metropolitan Open Land
- National Nature Reserve
- Nature Reserve
- Nature Conservation Sites of Metropolitan or Borough Grade I Importance
- Nature Conservation Sites of Borough Grade II or Local Importance
- Regionally Important Geological Site
- Not within London Borough of Hillingdon
- Hayes Housing Zone
- Hotel Growth Location
- Office Growth Location
- Hotel and Office Growth Location
- Locally Significant Employment Location
- Locally Significant Industrial Site
- Strategic Industrial Location
- Registered Park and Gardens
- Road Safeguarding
- Scheduled Ancient Monuments
- Site Allocations, Minerals and Transport Designations
- Sites of Special Scientific Interest
- Archaeological Priority Areas
- Archaeological Priority Zones
- Site for Gypsies and Travellers
- Extension within existing Gypsies and Travellers site
- Town Centres
- Local Centres

