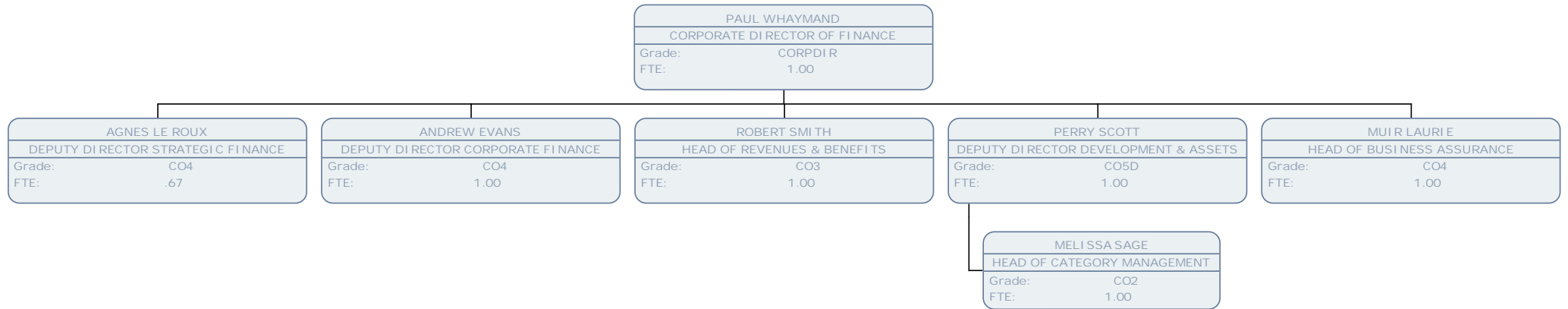
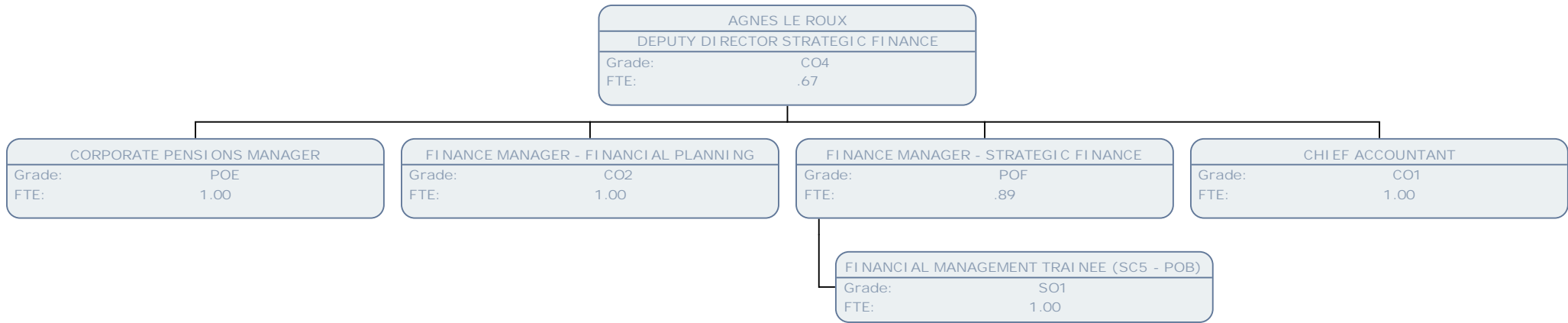
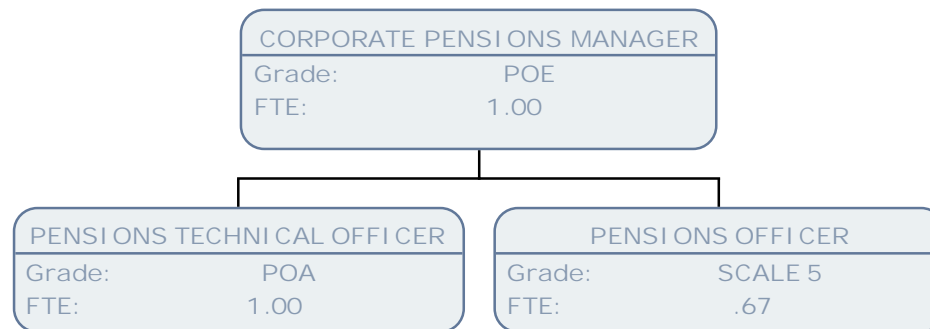


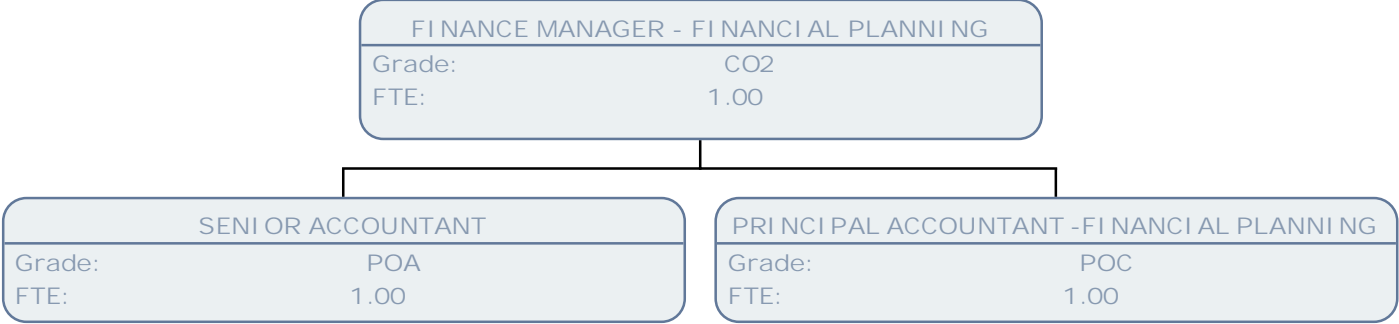
Finance Chart March 17

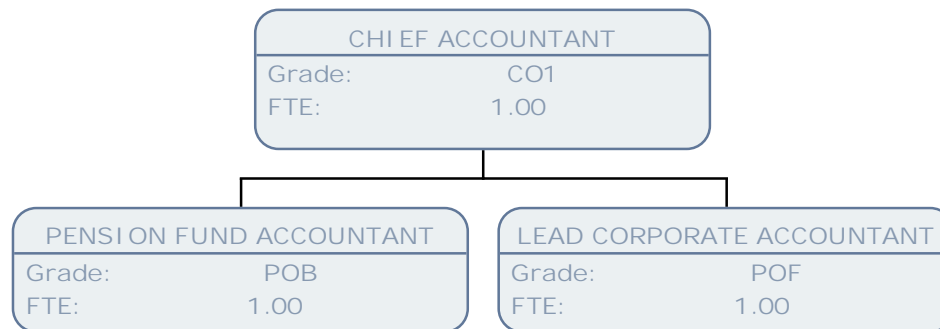
Finance

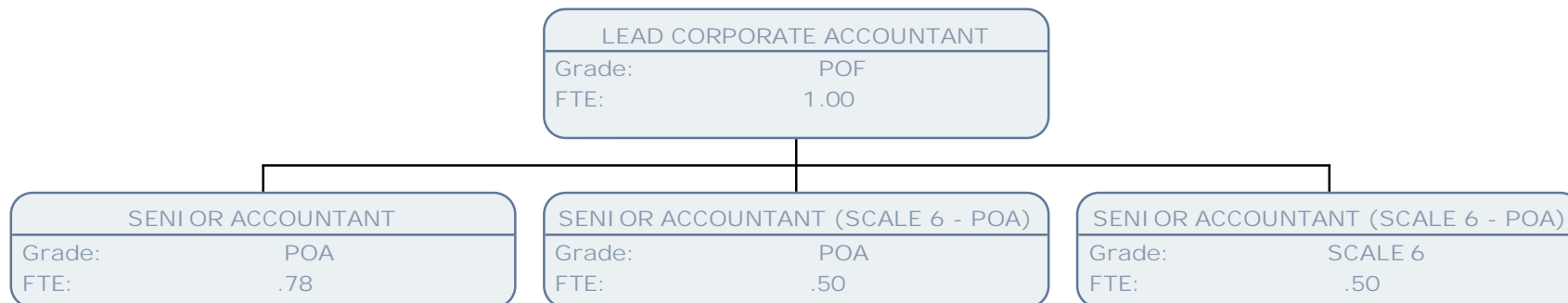












ANDREW EVANS	
DEPUTY DIRECTOR CORPORATE FINANCE	
Grade:	CO4
FTE:	1.00

FINANCE MGR - CAPITAL & TRANSFORMATION	
Grade:	CO2
FTE:	1.00

FINANCE MGR - EDUCATION & SCHOOLS	
Grade:	CO2
FTE:	1.00

FINANCE MANAGER ADMINISTRATION & FINANCE	
Grade:	CO1
FTE:	.89

FINANCE MANAGER - RESIDENT SERVICES	
Grade:	CO2
FTE:	1.00



